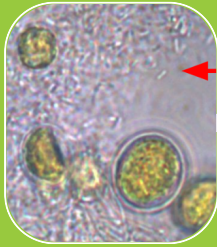


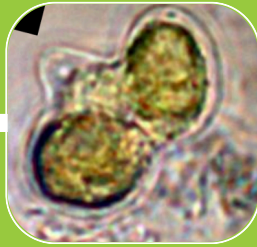
Why Live Cell Algae?

EnSoil Algae™ is living *Chlorella vulgaris*, a freshwater, green microalgae, that is optimized by Enlightened Soil Corp's patent pending growing process. The live cells act as transportation vehicles for soil microbes and chlorophyll (see green box). There is a symbiotic relationship between EnSoil Algae™, plants, and endophytic soil bacteria. The algae cells attract and carry bacteria into plant roots, thus promoting growth of root hairs.

Mechanism of live cell Chlorella vulgaris from Rutgers University study.



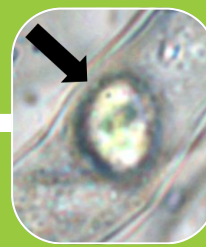
Algae surrounded by soil bacteria.



Bacteria enter algae cells...



...filling algae cells like bus passengers.



Algae cells enter plant root hairs & release bacteria & chlorophyll inside.



Root hairs are filled with bacteria & chlorophyll.



EnSoil Algae product



Commercial Broth



EnSoil Algae product



Commercial Broth

How do live cells differ from commercial broth?

EnSoil Algae™ works differently than commercial broth because the living algae cells actively participate in the soil ecosystem as transport vehicles for microbes and chlorophyll. Commercial broth only contains phytohormones and no live cells.

At Rutgers University, EnSoil Algae™ stimulates germination and growth in clover seeds at day 4 (left) and day 12 (right).